

In-line Case Weigher

With Automatic Reject Lane & "Legal for Trade" Trim Scale

Case weighing system with pacing conveyor to properly space the cases for accurate weighing. Automatically removes out of tolerance cases or RPC's (returnable plastic containers) by sending a reject signal to a powered "Pop-up" drive wheel diverter to smoothly direct the out of tolerance cases onto the reject lane.

The parallel reject lane merges onto a gravity skate wheel conveyor that allows the operator to easily move the case onto a **Trim Scale** for correcting the fill of the case to the proper weight. After adding or removing product to achieve the proper weight, the operator can easily position the case back onto the production line from the Ball Transfer bed that is fitted to the Trim Scale.

A digital readout clearly shows the weight and the **"Legal for Trade"** Weight Indicator can be fitted with an optional color coded light tree for visual target weights. Red shows underweight, green is good or target weight; and yellow indicates an overweight situation based

Accuracy: +/- .02 lb.

Weight: up to 50 lb.

Rate: up to 20 cases per minute

Voltage: 120 VAC, 15 AMP

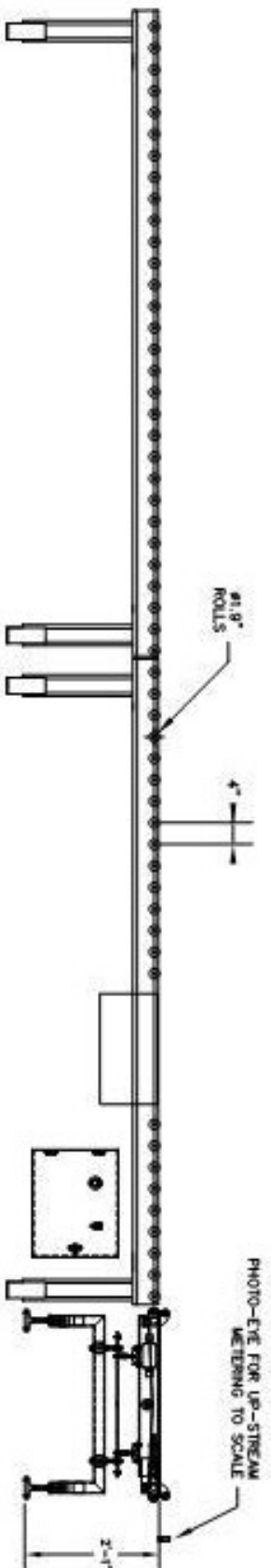
Air Supply: 90 PSI @ 4 CFM

Legal for Trade Weight Indicator

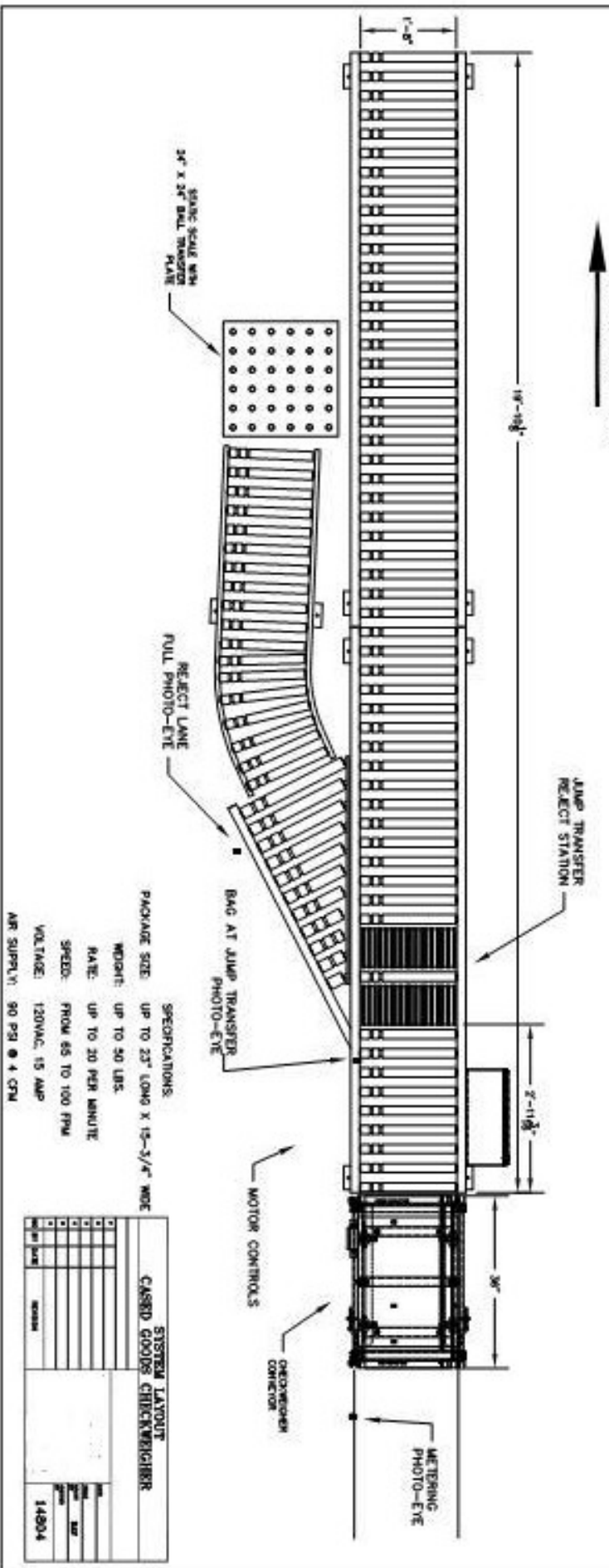


4760 Young Deer Drive, Cumming, Ga 30041





DIRECTION OF FLOW



SPECIFICATIONS:
 PACKAGE SIZE: UP TO 23" LONG X 15-5/8" WIDE
 WEIGHT: UP TO 50 LBS.
 RATE: UP TO 30 PER MINUTE
 SPEEDS: FROM 65 TO 100 FPM
 VOLTAGE: 120VAC, 15 AMP
 AIR SUPPLY: 90 PSI @ 4 CFM

SYSTEM LAYOUT	
CASRD GOODS CHECKWEIGHER	
Model	14804
Serial	
Weight	
Rate	
Speed	
Voltage	
Air Supply	



In-Line Case Weigher

with automatic reject lane and "Legal for Trade" Trim Scale

4760 Young DeerDrive, Cumming, Ga 30041

www.innovativeps.com

770-888-4512